

Beautifully Traditional

Burlington®

Classically styled bathrooms



Introduction

From the late 1800’s into the 1900’s, Britain led the way in bathroom design and performance. Burlington bathrooms bring a complete collection of traditional bathroom products for you to create a classical, British bathroom from eras of great design. Our range is extensive and allows you to create a look and feel to suit your personal choice, safe in the knowledge that these are all designed to co-ordinate together perfectly.



CERAMICS

SEE PAGE 2



FURNITURE

SEE PAGE 72



BATHS

SEE PAGE 102



TAPS & BRASSWARE

SEE PAGE 132



SHOWERING

SEE PAGE 154



ACCESSORIES

SEE PAGE 176

Contents

CERAMICS

There are four eras of history reflected in our designs; Classic, Edwardian, Victorian and Contemporary. Within each of these designs there are sizes to suit your bathroom, shower room or cloakroom. A selection of WCs and bidets are available to match your washbasin selection.

FURNITURE

A range of beautifully traditional furniture solutions to add classic style and sophisticated British elegance to your bathroom. Choose from free-standing, either a square or round design, wall-hung or fully-fitted options.

BATHS

Our range of baths includes grand free-standing baths, roll top baths and standard baths. Roll top baths have a range of matching feet and the Hampton roll top is even designed to fit into a corner, fitting a modest size bathroom.

TAPS & BRASSWARE

Burlington taps and mixers bring classic design packed with innovative technology. There are separate taps, one and three piece basin mixers, an Arch fitting and bath fittings with telephone handsets, each with a choice of handles for up to 324 combination2.

SHOWERING

Shower mixers with modern safe thermostatic control are the way forward for controllable showering, and a period enclosure can complete your bathroom.

ACCESSORIES

The look is complete with stunning chrome plated solid brass accessories. From corner baskets for your shower, to soap dispensers, they provide the perfect finishing touch to your bathroom.

OVERVIEW	2
CLASSIC	8
EDWARDIAN & VICTORIAN	24
CONTEMPORARY & STONE	40
WCS	50
CLOAKROOMS	66

OVERVIEW	72
FREESTANDING	74
WALL HUNG	86
FITTED	90

OVERVIEW	102
DOUBLE ENDED	104
SINGLE ENDED	118
SHOWERING	126

OVERVIEW	132
BASIN & BATH	136
SUNDRY	138

OVERVIEW	154
SHOWERS & VALVES	156
SHOWER ENCLOSURES	168

RADIATORS	176
MIRRORS & LIGHTS	180
ACCESSORIES	186

Ceramics

There are a great variety of basin options within the Burlington family. Choose from the simply styled Classic basin in either a round or square design, the Edwardian basin with its subtle angular appearance, again in a round or square design, Victorian with a refined look or Contemporary for a minimal and pared back form. Basins can be available in one, two or three tap hole options and can be used on a variety of styled pedestals; either full, regal, semi-pedestal, washstand or even counter-top options.



...on all sanitaryware
See website for details



The Ceramic Range

Yesterday's design with today's advanced technology

Burlington Bathroom design is governed largely by the washbasin style. Every design is crafted to reflect the specific era in which British sanitaryware rose in fame and was heralded as the best in aesthetic and performance. Burlington's key design themes are represented through Classic, Edwardian, Victorian and Contemporary eras. Every basin is crafted to the highest quality and is full of character and style with various choices in style, size and other options to suit your own individual tastes and requirements.



CLASSIC

The Classic collection from Burlington is beautifully formed, either as a curvaceous round design or a grand square model. This collection also features the invisible overflow, and innovative waste technology see p10 for details.

Pages 08-23



CLOAKROOM

A selection of cloakroom options have been crafted so you can match your chosen style throughout the home. You'll find Edwardian, Victorian and more Classic styled cloakroom basins to achieve a consistent and beautiful look throughout every washroom.

Pages 66-71

Pages 24-33



EDWARDIAN

The Edwardian collection is the ultimate in traditional bathrooms with structured corners and angular designs, the feel is un-apologetic and proud.



VICTORIAN

A delicate and refined range, the simplicity of this ceramic basin is stunning. Available in a medium (56cm) or large (61cm) and a range of pedestal and tap hole options, the versatility of this style allows you to continue the style throughout your home and brings an air of luxury to every room.

Pages 34-39



CONTEMPORARY

As the name suggests, the Contemporary collection is styled on the elegance of past times but with a modern day twist. Simplistic, structured lines form the basis for this striking ceramic collection. Available as full pedestal, semi-pedestal or with a chrome washstand.

Pages 40-43



...on all sanitaryware
See website for details

Regal Sanitaryware

Why We're Making Taller Sanitaryware

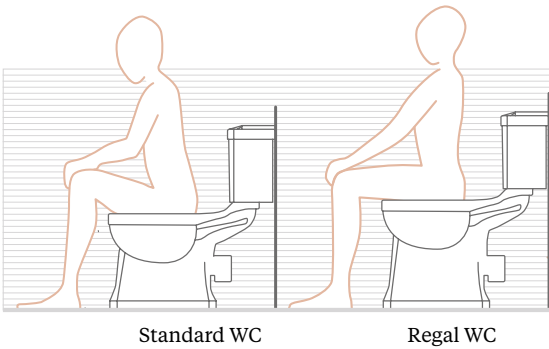
At Burlington we've reacted to market demands by creating our Regal range of sanitaryware.

In Europe the height of an average male has increased by approximately 15cm in the past 130 years (with the knee height increasing by an estimated 6cm).

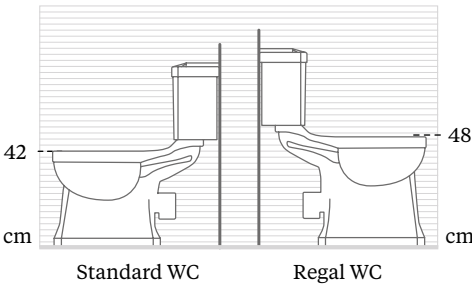
Here at Burlington we've created a range that's 6cm higher than average sanitaryware.

When using a WC the correct seating position is to have a knee angle of approximately 90°. At 48cm high the Regal WCs enable this.

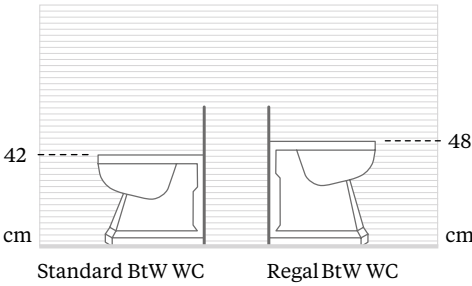
Higher sanitaryware not only helps taller people but it also helps if you're older: It's far easier getting on and off a loo that's 48cm high than one that's 42cm high. The basin height is higher too; reducing the need to arch your back too much.



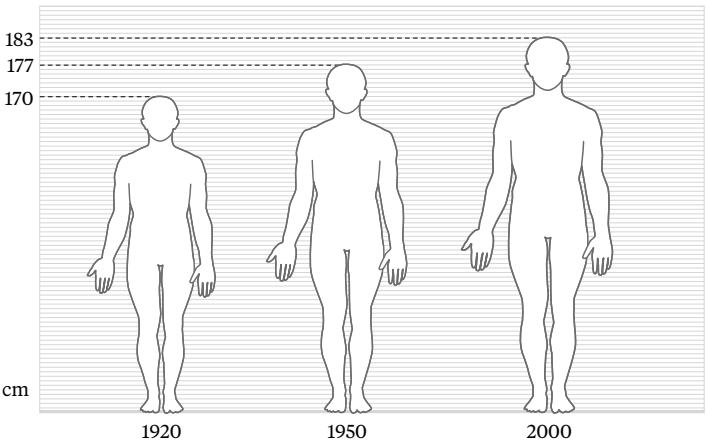
CLOSE COUPLED & LOW LEVEL WCS



BACK TO WALL WCS



EUROPEAN HEIGHT INCREASES



PEDESTAL OPTIONS ↓ Available with the Classic & Classic Round Basins

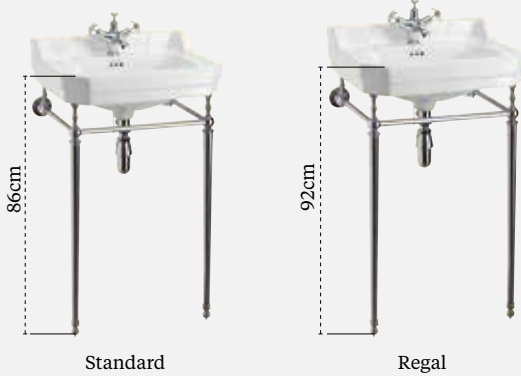
Burlington Regal pedestals are 6cm higher than the standard pedestals.

	Standard Height	Regal Height
Classic	86cm	92cm
Victorian classic	84cm	90cm
Edwardian classic	84cm	90cm
Contemporary classic	84cm	90cm



WASHSTAND OPTIONS ↓ Available with the Classic, Edwardian, Victorian and Cloakroom

Burlington Regal washstands are 6cm higher than the standard washstand to ensure a more ergonomic use for taller individuals.



Classic

CERAMICS



Classic Basin with Invisible overflow. See page 20 for more details.

Classic Basin 1TH with Pedestal.



Classic Round 3TH with Regal Pedestal.



The Classic basin collection from Burlington is beautifully formed, either as a grand square design or a curvaceous round model. This collection also features an innovative waste technology. Choose a Classic basin with invisible overflow allowing you to have seamless ceramic without a plug. All Classic basins are available as 1, 2 or 3 tap holes on standard or regal pedestals or a range of washstands and furniture see page 74, 75 & 76 for more details.



PEDESTAL OPTIONS ↓ Available with the Classic & Classic Round Basins

Burlington Regal pedestals are 6cm higher than the standard pedestal to ensure a more ergonomic use for taller individuals.



CERAMICS



The Classic round basin has beautiful form with a curvaceous front adding an interesting feature to a simplistic overall appearance. The piece works seamlessly with other classically designed Burlington products such as close-coupled WCs or soft, rounded soaking tubs.

Classic round basin with standard pedestal, Claremont 5" basin pillar taps, plug & chain basin waste, close-coupled WC and cistern with ceramic lever with soft-close mahogany seat (or with chrome handles), and ceramic trap. Brindley bath and skirt.

See pages 22-23 for technical details on the Classic round basin.

WC FLUSH ←
Design a bathroom to suit your specific needs

View the full range of WCs from page 50 onwards

All Burlington WCs are fitted with box rims, which even though they are harder to manufacture, provide a more accurate flush spread. The cisterns are fitted with dual flush water saving technology.

Pair your beautifully styled Classic round basin with the new round pedestal.
With its elegant form and tasteful detailing, the overall effect is one of refined class.

This page and opposite: Classic round basin with Classic round pedestal, Claremont basin 5" pillar taps and plug and chain basin waste.
See pages 22-23 for technical details on the Classic round basin.



A grand basin design, the Classic works beautifully in every surrounding to create a vintage inspired bathroom, effortlessly.

Bloomsbury radiator with angled radiator valves, Rectangular mirror, Classic basin with standard pedestal and Anglesey 3 tap hole basin mixer with pop-up waste.

See pages 22-23 for technical details on the Classic basin.

Classic basin 1 tap hole with chrome basin stand, Claremont 1 tap hole basin mixer with pop-up waste and traditional basin bottle trap.

See pages 22-23 for technical details on the Classic basin.

English Garden

The English garden range sees the Classic style basins brought to life with delicate floral transfers. The new round pedestal is softened with finite moulded detail, exuding class and sophistication.



This page top: English garden close-coupled WC with cistern with soft-close seat white and ceramic trap (see page 63). English garden round basin and English garden round pedestal with Claremont 1 tap hole basin mixer with click-clack waste.

This page bottom: English garden basin and English garden pedestal with Claremont 1 tap hole basin mixer with central indice and click-clack waste.

See page 22 for technical details on the English Garden basins.

CERAMICS



Rectangular mirror, Edwardian single elliptical lights, Classic basin invisible overflow with standard pedestal and invisible overflow waste and bottle trap, Claremont 5" basin pillar taps, medium-level WC with ceramic cistern lever with soft-close oak seat (or with chrome handles) and ceramic trap.

CERAMICS



Bloomsbury radiator with angled radiator valves, Rectangular mirror, Classic basin invisible overflow with standard pedestal, Claremont 5" basin pillar taps and invisible overflow waste.

See pages 22-23 for technical details on the Classic basin.

Invisible Overflow

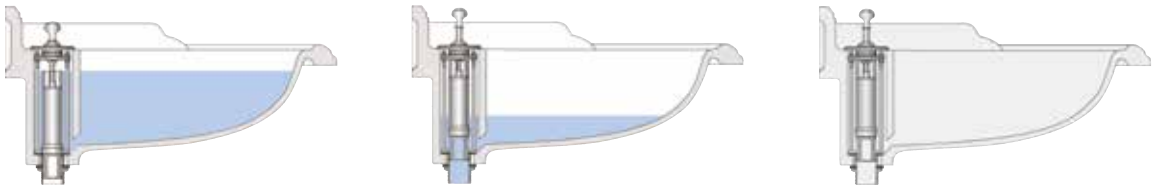


Classic basin invisible overflow & waste
W9



On all sanitaryware
See website for details

The benefit of invisible overflow is that the ceramic of the beautiful basins is un-interrupted with no requirement for a plug or external waste. Simply pull the lever up to drain water. Pair with the elegant and beautiful Arch basin mixer allowing you to mix hot and cold water.



Classic Basins

CLASSIC BASINS

Basin Shapes	Basins			Pedestals		Chrome Wash Stands		Aluminium Wash Stands (E)
				Standard (C)	Regal	Standard (D)	Regal	
	Width	Depth	Code	Code	Code	Code	Code	Code
Rectangular (A)	65cm	58cm	B15 z*	P6	P9R	T49ACHR	T49ACHR+T62	T38 ALU** T43 WHI** T48 BLA**
Round (B)	65cm	58cm	B17 z*	P6	P9R			

ENGLISH GARDEN CLASSIC BASINS

Basin Shapes	Basins			Pedestals*		Chrome Wash Stands		Aluminium Wash Stands
				Standard	Regal	Standard	Regal	
	Width	Depth	Code	Code	Code	Code	Code	Code
Rectangular	65cm	58cm	B15D*	-	P9RD	T49A CHR	T49ACHR+T62	T38 ALU** T43 WHI** T48 BLA**
Round	65cm	58cm	B17D*	-	-			

* Classic basins are available with 1, 2 or 3 tap holes. To order the correct basin configuration Simply remove the 'z' and replace it with 1TH, 2TH or 3TH.
** To order the correct wash stand colour specify 'T38 ALU' for aluminium, 'T43 BLA' for Black, or 'T48 WHI' for white.



For Classic basins with furniture see pages 76, 77 and 86.

Classic Invisible Overflow Basins

CLASSIC INVISIBLE OVERFLOW BASINS

Basin Shapes	Basins			Pedestals		Chrome Wash Stands		Aluminium Wash Stands (E)
				Standard (C)	Regal	Standard (D)	Regal	
	Width	Depth	Code	Code	Code	Code	Code	Code
Rectangular (F)	65cm	58cm	B14*	P6	P9R	T49CHR	T49ACHR+T62	T38 ALU** T43 WHI** T48 BLA**
Round (G)	65cm	58cm	B16*	P6	P9R	-	-	-

Classic basins with invisible overflows are only available in two tap hole and must use basin waste W9
* Overall heights to the top of the front basin surface:
Classic Basin with Standard Pedestal: 86cm
Classic Basin with Regal Pedestal: 92cm
Classic Basin with wash stand: 88cm
Classic Basin with Regal basin stand: 92cm
Classic Basin with Aluminium wash stand: 89cm
** To order the correct wash stand colour specify 'T38 ALU' for aluminium, 'T43 BLA' for Black, or 'T48 WHI' for white.



Classic basin invisible overflow & waste W9



For Classic Invisible Overflow basins with furniture see pages 76, 77 and 86.

Edwardian

56cm Edwardian 1TH
Basin & Washstand.



The Edwardian collection is the ultimate in traditional bathrooms with structured upstands and angular designs, the feel is un-apologetic and proud. Edwardian basins come in a range of sizes from the Standard 56cm to the Large 61cm and now with the exciting addition of a Grand 80cm basin which will provide an eye catching centrepiece to your period styled bathroom. All are available in one, two or three taphole options and all can be used on the standard pedestal, the Regal pedestal, the semi-pedestal or on a washstand.

There is also a 56cm Edwardian round basin available with one or two tapholes, also suitable for all the pedestal and washstand options. With the strong personality of the upstand back, this basin is true traditional design at its very best.

61cm Edwardian 1TH Basin with
Semi-pedestal & Towel Rail.



56cm Edwardian Round 1TH
Basin & Regal Pedestal.



56cm Edwardian Round 1TH
Basin & Wash Stand



Edwardian 61cm basin with standard pedestal
and Claremont 3 tap hole basin mixer with pop-up waste.

See pages 30-33 for technical details on the Edwardian basins collection.



Edwardian 80cm basin with basin stand, Claremont 3 tap hole basin mixer with pop-up waste, flat bottomed basin bottle trap and curved mirror.

See pages 30-33 for technical details on the Edwardian basin.



Edwardian 80cm basin with standard pedestal and Claremont 3 tap hole basin mixer with pop-up waste.



The Edwardian basin is available in a range of sizes and options. Pair with a semi-pedestal combined with a towel rail for the illusion of increased space in smaller bathrooms. The towel rails are available to add to any basin, adding extra functionality.



Edwardian Rectangular Basin

Edwardian 61cm basin with semi-pedestal and towel rail, Claremont 1 tap hole basin mixer with click-clack waste. Low-level WC slimline cistern with front flush button, soft-close oak seat (with chrome handles), ceramic trap and WC toilet roll holder.

See pages 30-33 for technical details on the Edwardian basin.



Edwardian Rectangular Basins

EDWARDIAN RECTANGULAR BASINS

Basins			Pedestals			Chrome Basin Stands		Towel Rails (D)
			Standard (B)	Regal	Semi	Standard (C)	Regal	
Width	Depth	Code	Code	Code	Code	Code	Code	Code
56cm	47cm	B4 z*	P1	P9	P8	T22A CHR	T22ACHR+T62	T1 CHR
61cm (A)	51 cm	B5 z*	P1	P9	P8	T23A CHR	T23ACHR+T62	T3 CHR
80cm	51cm	B18 z*	P6	P9		T50 CHR	T50CHR+T62	

* Edwardian Rectangular Basins are available with 1, 2 or 3 tap holes. To order the correct basin configuration simply remove the 'z' and replace it with 1TH, 2TH or 3TH.



...on all sanitaryware
See website for details



Edwardian Round Basins

EDWARDIAN ROUND BASINS

Basins			Pedestals			Chrome Basin Stands		Towel Rails (D)
			Standard (B)	Regal	Semi	Standard (C)	Regal	
Width	Depth	Code	Code	Code	Code	Code	Code	Code
56cm (A)	47cm	B6 z*	P1	P9	P8	T24A CHR	T24ACHR+T62	T4 CHR

* Edwardian Round Basins are available with 1 or 2 tap holes. To order the correct basin configuration Simply remove the 'z' and replace it with 1TH or 2TH.

Overall heights to the top of the front basin surface:

Edwardian Basin with Standard Pedestal: 84cm

Edwardian Basin with Regal Pedestal: 90cm

Edwardian Basin with Basin stand: 84cm

Edwardian Basin with Regal basin stand: 90cm



(A)

(A)

(D)



...on all sanitaryware
See website for details



Edwardian round 56cm basin with pedestal, Claremont 5" basin pillar taps and plug and chain waste. Low-level WC slimline cistern with front flush button with soft-close oak seat (with chrome handles) and ceramic trap. WC toilet roll holder. London round soaking tub with floor-standing Claremont bath shower mixer. Edwardian single elliptical light.

Victorian

CERAMICS



Victorian 61cm 2 tap hole basin and pedestal with Claremont 5" pillar taps, plug and chain waste, rectangular mirror and soap dish.

See pages 39 for technical details on the Victorian basin.

Victorian 56cm 1TH, Semi-pedestal.



A delicate and refined range, the simplicity of this ceramic basin is stunning. Available in a large (61cm) and medium (56cm) with a range of pedestals, and in one, two or three tap hole options.

Victorian basin & wash stand.



Victorian 61cm 1TH, with Towel Rail.



PEDESTAL OPTIONS ↓ Available with the Victorian Basins

Burlington Regal pedestals are 6cm higher than the standard pedestal to ensure more ergonomic use for taller individuals.



CERAMICS

This page: Victorian 56cm basin with regal pedestal Claremont 3 tap hole basin mixer with pop-up waste, rectangular mirror, round light with Chiffon silver shade, soap dish and towel ring.

Opposite: Victorian 56cm basin with chrome basin stand and Claremont 1 tap hole basin mixer with high central indice, click-clack waste and tumbler and holder.

See pages 39 for technical details on the Victorian basin.



Victorian 61cm basin with semi-pedestal & towel rail, Claremont 5" pillar taps, plug and chain waste, tumbler and holder.

See pages 39 for technical details on the Victorian basin.



BASIN OPTIONS →

Design a bathroom to suit your specific needs

View our Victorian cloakroom basins on page 39 or visit us at burlingtonbathrooms.com

All Victorian basins are available on standard or regal pedestals, semi-pedestals or chrome washstands to suit your own needs and tastes. Also available as cloakroom basin sizes to continue the design linked appearance throughout your home.

Victorian cloakroom 2 tap hole basin with towel rail, Claremont 3" basin taps, plug and chain waste and bottle trap.





Match your exquisite Victorian basin with luxurious fittings and intricate detail with Burlington accessories and a high-level WC with ornate brackets, giving the extra “wow” factor to your period bathroom.

Victorian 61cm 2 tap hole basin and pedestal with Claremont 5” pillar taps, plug and chain waste, rectangular mirror and soap dish, Berkeley radiator (just seen) , Burlington round light with chrome base and chiffon silver shade. High-level WC white ceramic cistern with oak throne seat. Harewood slipper bath with white arc feet and Claremont deck-mounted angled bath shower mixer with ‘S’ adjuster and Fire Hydrant waste.

See pages 39 for technical details on the Victorian basin.

Victorian Basins

VICTORIAN BASINS

Basins			Pedestals			Chrome Basin Stands		Towel Rails (D)
			Standard (B)	Regal	Semi	Standard (C)	Regal	
Width	Depth	Code	Code	Code	Code	Code	Code	Code
56cm	47cm	B2 z*	P1	P9	P8**	T22ACHR	T22ACHR	T1 CHR
61cm (A)	51cm	B3 z*	P1	P9	P8**	T23ACHR	T23ACHR	T3 CHR

* Victorian Basins are available with 1, 2 or 3 tap holes. To order the correct basin configuration Simply remove the ‘z’ and replace it with 1TH, 2TH or 3TH.

** 3TH basins cannot be used with semi pedestals

Overall heights to the top of the front basin surface:

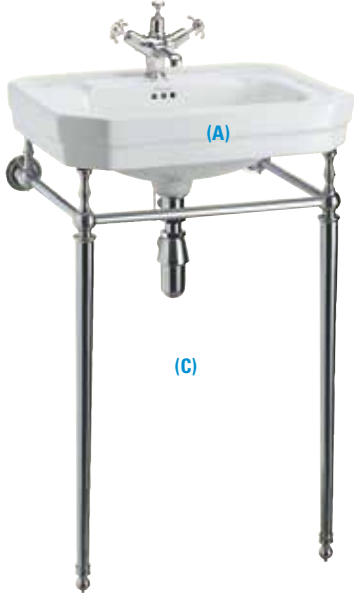
Victorian Basin with Standard Pedestal: 84cm

Victorian Basin with Regal Pedestal: 90cm

Victorian Basin with Basin stand: 84cm



(A)



...on all sanitaryware
See website for details

Contemporary

CERAMICS



Rectangular mirror, Contemporary basin and semi-pedestal with Claremont 1 tap hole basin mixer with high central indice and pop-up waste.

See page 43 for technical details on the Contemporary basins.

Contemporary 58cm 1TH, with Towel Rail.



Contemporary 58cm Washstand 1TH.



For a more intergrated look, sink either our semi-recessed or counter-top basins into your bathroom work surfaces.

SEMI-RECESSED BASIN 58CM

One tap hole B121TH
Two tap hole B122TH



COUNTERTOP BASIN 54CM

One tap hole B131TH
Two tap hole B132TH



CERAMICS



This page & opposite: Contemporary basin with semi-pedestal, with Claremont 1 tap hole basin mixer with high central indice click-clack waste. Rectangular mirror.
See page 43 for technical details on the Contemporary basin.

Contemporary Basins

CONTEMPORARY BASINS

Basins			Pedestals			Chrome Basin Stands		Towel Rails
			Standard (B)	Regal	Semi	Standard (C)	Regal	(D)
Width	Depth	Code	Code	Code	Code	Code	Code	Code
58cm (A)	47cm	B1 z*	P1	P9	P8	T22A CHR	T22A CHR+T62	T2 CHR

* Contemporary Basins are available with 1, 2 or 3 tap holes. To order the correct basin configuration Simply remove the 'z' and replace it with 1TH, 2TH or 3TH.
Overall heights to the top of the front basin surface:
Contemporary Basin with Standard Pedestal: 84cm
Contemporary Basin with Regal Pedestal: 90cm
Contemporary Basin with Basin stand: 84cm
Contemporary Basin with Regal basin stand: 90cm

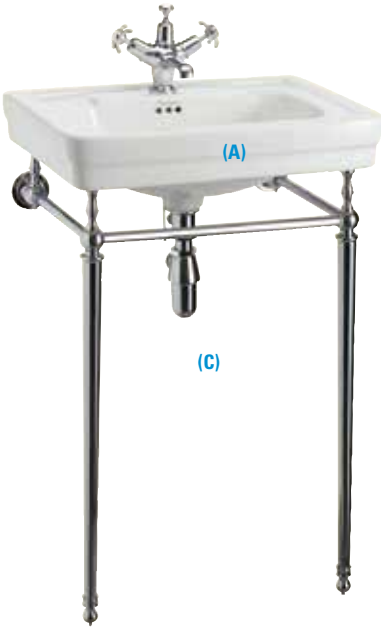


(A)



(A)

(B)



(A)

(C)



(A)

(D)



...on all sanitaryware
See website for details

Stone

Carrara marble top and basin with chrome washstand with Claremont 3 tap hole basin mixer with pop-up waste.

See page 47 for technical details on marble and granite washstands.

Roll top natural stone basin with stainless steel stand



Carrera marble & Polished Aluminium Washstand.



Burlington stone covers both velvety soft natural stone basins and the divine marble and granite ranges. Pair exquisite pebble grey marble basin tops to either chrome or aluminium washstands. Marble and granite are natural materials, difference in colour, shading and veining are natural characteristics and this is part of their charm.

Carrera marble & Chrome Washstand.





MARBLE Provides an eye-catching and gorgeous focal point in your vintage setting. The beautiful pebble grey marble can be added to various washstands or even wooden vanity units.

Carrara marble top and basin with chrome washstand with Claremont 3 tap hole basin mixer with pop-up waste, and basin bottle trap.

GRANITE & MARBLE ↑
Design a bathroom to suit your specific needs

View all options online at burlingtonbathrooms.com, or look at page 47

All granite and marble basin worktops are provided with matching splashbacks and sides in the same box. Enabling you to tailor make your beautiful basin to your individual tastes.

Georgian Marble Washstands

GEORGIAN MARBLE WASH STANDS

Marble Basins			Chrome Basin Stands		Aluminium Wash Stands	Aluminium Wash Stands
			Standard (B)	Regal	(C)	with shelf (D)
Width	Depth	Code	Code	Code	Code	Code
58cm (A)	58cm	G1 z*	T49ACHR	T49ACHR+T62	T38 ALU** T43 WHI** T48 BLA**	T38 ALU** + G11 T43 WHI** + G11 T48 BLA** + G11

* Marble Basins are available with 1, 2 or 3 tap holes. To order the correct basin configuration Simply remove the 'z' and replace it with 1TH, 2TH or 3TH.

** To order the correct wash stand colour specify 'T38 ALU' for aluminium, 'T43 BLA' for Black, or 'T48 WHI' for white.

Marble basins can be installed with rear & side upstands, rear upstand only or no upstand

Overall heights to the top of the front basin surface:

Basin with Basin stand: 81cm

Basin with Regal basin stand: 87cm

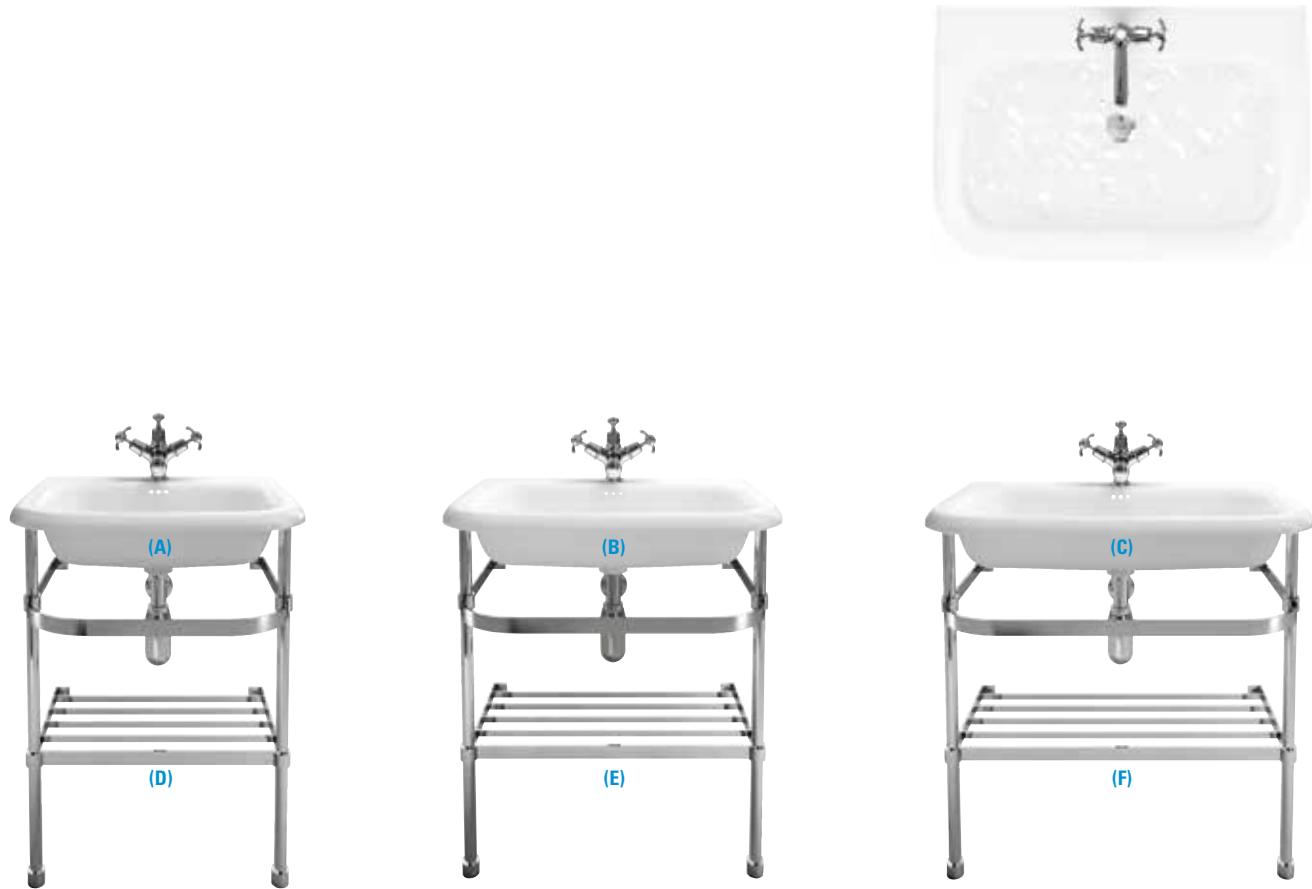


Traditional Natural Stone Basins

NATURAL STONE BASINS & WASH STANDS

Natural Stone Roll Top Basins Basins				Stainless Steel Basin Stands
Model	Width	Depth	Code	Code
Small	55cm (A)	47cm	B7E	B7ES (D)
Medium	65cm (B)	47cm	B8E	B8ES (E)
Large	75cm (C)	47cm	B9E	B9ES (E)

* Natural Stone basins are available with no tap hole, 1 tap hole, 2 tap hole or 3 tap hole (drilled on site)
Overall heights, when on a Basin stand, to the top of the front basin surface: 88cm



NATURAL STONE A velvety soft natural stone basin available in three sizes. Set these gorgeous basins into countertops or pair with our beautiful stainless steel washstands.

Medium natural stone basin with stainless steel basin stand
Claremont 1 tap hole basin mixer with click-clack waste, and basin bottle trap.

See opposite page 48 for technical details on natural stone basins.



WCs

Burlington WCs come in a range of options, from the more contemporary wall-hung or back-to-wall options, to traditional close-coupled or the impressive low, medium or high-level WCs. All options feature water saving technology, only flushing 6L for a full flush or 3L for a half. These factory settings can be adjusted to 4 ½ L for a full flush or 2 ½L for a half flush. Pair your WC with a real wood seat to accentuate the classic styling. Unlike many other traditional brands, Burlington offer soft-close options on white, oak and mahogany seats. Or for a premium look, select the throne seat with intricate and ornate brackets, which provide a focal point in your stunning vintage bathroom.



25 YEAR GUARANTEE
ON ALL OUR
SANITARYWARE

See website for details

WC OPTIONS

Select a range of alternative cistern and seat options
and colours to tailor your WC to your own tastes

For all options visit www.burlingtonbathrooms.com

Close-coupled, low-level and medium-level WCs are available with either a ceramic lever flush, or a more contemporary front flush button. All WCs with a cistern are also available in standard 51cm or slimline 44cm cisterns to add greater flexibility to the placement of your WC. Cisterns come in a range of colours and styles too, from deep mahogany for low-level, to simple white ceramic or for high-level, aluminium in white, black or polished effect.



Wall-hung Back-to-wall Close-coupled Low-level Medium-level High-level

nanoGLAZE
ceramic that stays cleaner
**A cleaner toilet, by design
and with NANO Glaze**

We believe that the toilet bowl should still remain as clean as possible even with reduced flushing water and therefore engineer our toilet bowls to maintain the correct water area as previous British Standards and by coating the toilet bowl with NANO Glaze to make them exceptionally easy to keep clean.



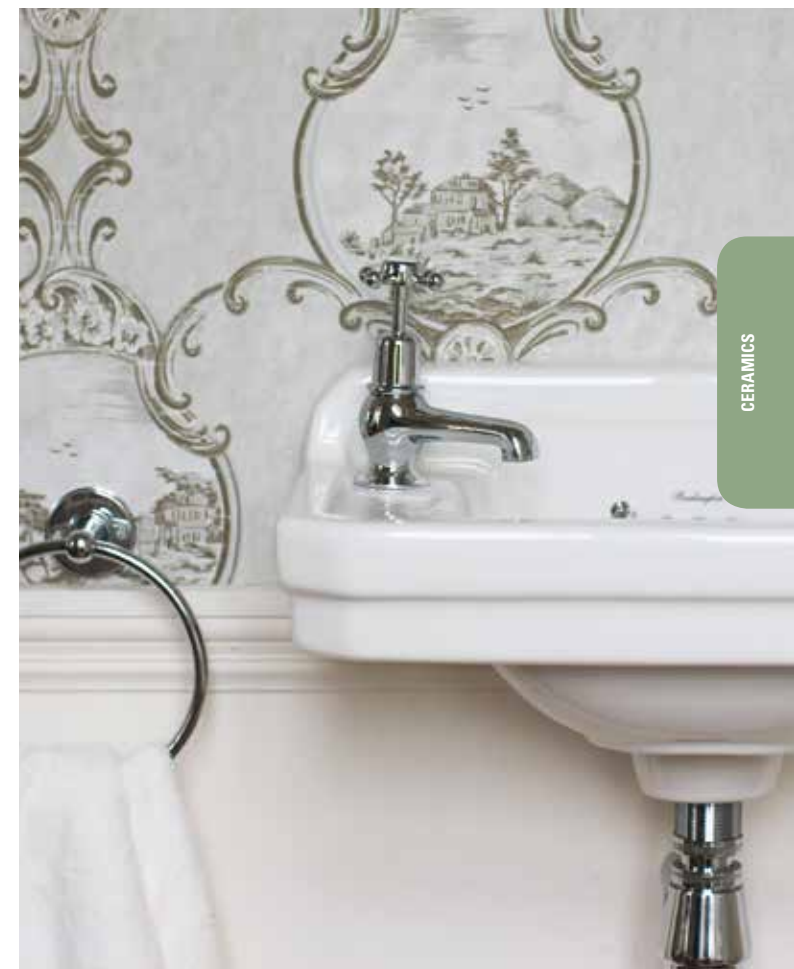
Close Coupled

The most traditional of the WC's, with a narrow width range for those smaller cloakrooms.



The Edwardian cloakroom range is the perfect addition to small bathrooms where other Edwardian pieces are used throughout the home, giving a cohesive and seamless look and feel. The basin is available as a wall-mounted option, with the addition of a towel rail, or with a chrome washstand.

See page 54 for more Close Coupled WC options



Edwardian cloakroom basin, Claremont 3" pillar taps, traditional basin bottle trap and Towel ring.

Close-coupled WC with slimline push button cistern, soft-close mahogany seat (with chrome handles).

Close Coupled WCs, Seats & Bidets

CLOSE COUPLED WC'S

Model	Ceramic	Type*	As Shown	Width	Depth	Overall Height	Pan Height	Pan Code	Cistern Code
with ceramic cistern lever	White	P		52cm	73cm	78cm	42cm	P5	C1
with push button	White	P	(B)	52cm	73cm	78cm	42cm	P5	C2
with ceramic cistern lever	English garden	P	(C)	52cm	73cm	78cm	42cm	P5D	C1D
with ceramic cistern lever	White	S		52cm	73cm	78cm	42cm	P18	C24/C30***
with push button	White	S		51cm	73cm	78cm	42cm	P18	C25
with slimline cistern	White	S		44cm	73cm	78cm	42cm	P18	C4

* P means horizontal P trap pan; S means S trap pan
** Complete WC price is for a complete WC as described excluding the seat
*** C24 rough-in is 21cm. C30 rough-in is 24cm.
Note: Rear entry water supply cisterns (with rear entry cistern fittings) are available using Cistern Code: C24 for ceramic cistern lever & C25 for push button

REGAL CLOSE COUPLED WC'S

Model	Ceramic	Type*	As Shown	Width	Depth	Overall Height	Pan Height	Pan Code	Cistern Code
with ceramic cistern lever	white	P	(A)	52cm	73cm	84cm	48cm	P12	C1
with push button	white	P		52cm	73cm	84cm	48cm	P12	C2
with slimline cistern	white	P		44cm	73cm	84cm	48cm	P12	C4

SEATS

Colour	Material	Standard Seat	Soft Close Seat	Soft Close Seat with Handles
		Code	Code	Code
White	Carbamide	S13	S18	-
Oak	Wood	S11	S16	S16+A51 CHR
Mahogany	Wood	S12	S16	S16+A51 CHR
Matt White***	Wood		S45	S45+A51 CHR
Dark Olive***	Wood		S44	S44+A51 CHR
Sand***	Wood		S43	S43+A51 CHR

*** See page 95

BIDETS

Model	Ceramic	Width	As Shown	Depth	Overall Height	Code
Floor Standing	White	40cm	(E)	57cm	40cm	P4
Floor Standing	English Garden	40cm	(F)	57cm	40cm	P4D

Ceramic traps
For converting P-trap pans to S-trap
C26

Straight ceramic trap
C29



All Burlington WC fittings are factory set at 3L and 6L flush. They can be adjusted on site to flush at 2 1/2 L and 4 1/2 L.



All Burlington Close-coupled WCs are supplied with dual flush WRAS fittings.



...on all sanitaryware
See website for details

REGAL WCs

Regal WC pans are 6cm higher than the standard option. The taller WC pan ensures the knee angle remains at approximately 90 degrees whilst in use. This provides a more comfortable use for taller people and the elderly but also transforms your bathroom into both a beautiful and functional space.



Regal WCs are available with all Burlington WCs except English Garden and Concealed Bottom Outlet

LEVER OR PUSH BUTTON CISTERN

Available with all Burlington Close-coupled, Low & Mid level WCs

Choose between the classic ceramic flush lever or the more contemporary flush front button.



Lever
51cm Cistern (C1)
44cm Cistern (C3)



Push Button
51cm Cistern (C2)
44cm Cistern (C4)



Edwardian round 56cm basin with pedestal, Claremont 5" basin pillar taps and plug and chain waste. Low-level WC slimline cistern with front flush button with soft-close oak seat (with chrome handles) and ceramic trap. WC toilet roll holder. London round soaking tub with floor-standing Claremont bath shower mixer. Edwardian single elliptical light.

See page 32 for technical details on the round basin.



Rectangular mirror, Edwardian single elliptical lights, Classic basin invisible overflow with standard pedestal and invisible overflow waste and bottle trap, Claremont 5" basin pillar taps, medium-level WC with ceramic cistern lever with soft-close oak seat (or with chrome handles) and ceramic trap.

SEATS

Colour	Material	Standard Seat	Soft Close Seat	Soft Close Seat with Handles	Low Level Throne Seat**
		Code	Code	Code	Code
White	Carbamide	S13	S18	-	-
Oak	Wood	S11	S16	S16+A51 CHR	S19
Mahogany	Wood	S12	S16	S17+A51 CHR	S20
Matt White*	Wood	-	S45	S45+A51 CHR	-
Dark Olive*	Wood	-	S44	S44+A51 CHR	-
Sand*	Wood	-	S43	S43+A51 CHR	-

* See page 95

** See page 63 F & G for what a Low Level Throne Seat looks like

BIDETS

Model	Ceramic	Width	As Shown	Depth	Overall Height	Code
Floor Standing	white	40cm	(E)	57cm	40cm	P4
Floor Standing	English Garden	40cm	(F)	57cm	40cm	P4D



Ceramic traps
For converting P-trap pans to S-trap
C26

Straight ceramic trap
C29

LOW & MEDIUM LEVEL WCS

All Burlington WC fittings are factory set at 3L and 6L flush. They can be adjusted on site to flush at 2 1/2L and 4 1/2L.

All Burlington Close-coupled WCs are supplied with dual flush WRAS fittings.

Low & Medium Level
WCs, Seats & Bidets

LOW & MEDIUM LEVEL WC'S

Type	Model	Ceramic	Type*	As Shown	Width	Depth	Overall Height	Pan Height	Pan Code	Cistern Code	Flush Pipe Kit Code
Low Level	ceramic cistern lever	white	P	(A)	52cm	74cm	96-114cm	42cm	P2	C1	T31CHR
Low Level	push button	white	P		52cm	74cm	96-114cm	42cm	P2	C2	T31CHR
Low Level	ceramic cistern lever	English Garden	P	(B)	52cm	74cm	96-114cm	42cm	P2D	C1D	T31CHR
Low Level	ceramic cistern lever	white	S		52cm	74cm	96-114cm	42cm	P19	C24/C30***	T31CHR
Low Level	push button	white	S		45cm	74cm	96-114cm	42cm	P19	C25	T31CHR
Medium Level	ceramic cistern lever	white	P	(C)	52cm	71cm	134-143cm	42cm	P5	C1	T33CHR
Medium Level	push button	white	P		52cm	71cm	134-143cm	42cm	P5	C2	T33CHR
Medium Level	ceramic cistern lever	English Garden	P	(D)	52cm	71cm	134-143cm	42cm	P5D	C1D	T33CHR

* P means horizontal P trap pan; S means S trap pan
** complete WC price is for a complete WC as described excluding the seat
*** C24 rough-in is 26cm to 33cm. C30 rough-in is 29cm to 36cm.
Note: Rear entry water supply cisterns (with rear entry cistern fittings) are available using Cistern Code: C24 for ceramic cistern lever & C25 for push button

REGAL HEIGHT WC'S

Type	Model	Ceramic	For use in*	As Shown	Width	Depth	Overall Height	Pan Height	Pan Code	Cistern Code	Flush Pipe Kit Code
Low Level	ceramic cistern lever	white	UK		52cm	74cm	96-114cm	48cm	P16	C1	T31CHR
Low Level	push button	white	UK		52cm	74cm	96-114cm	48cm	P16	C2	T31CHR



HIGH-LEVEL WCS ↓
Design a bathroom to suit your specific needs

View the full range of WCs on pages 113

The angled high-level WC is a great option for those wanting to achieve the wow factor achieved with this type of WC, but needing to work around windows or within awkwardly shaped bathrooms. All high-level WCs are also supplied with a rigid pull rod to enable water saving; pull down for a full flush of 6 litres, or push up for a half flush of 3 litres. This can also be adjusted to 4.5 litres and 2.5 litres if required. Also available is a single flush chain and ceramic pull.

Toilet roll holder, High-level WC with white ceramic cistern and angled extension pipes with mahogany soft-close seat (with chrome handles).

See page 62 for technical details on high-level WCs.

Match your exquisite Victorian basin with luxurious fittings and intricate detail with Burlington accessories and a high-level WC with ornate brackets, giving the extra wow factor to your period bathroom.

Victorian 61cm 2 tap hole basin and pedestal with Claremont 5" pillar taps, plug and chain waste, rectangular mirror and soap dish, Berkeley radiator (just seen), Burlington round light with chrome base and chiffon silver shade. High-level WC white ceramic cistern with oak throne seat. Harewood slipper bath with white arc feet and Claremont deck-mounted angled bath shower mixer with 'S' adjuster and Fire Hydrant waste.

See page 39 for technical details on the Victorian basin.

High Level WCs, Seats & Bidets

HIGH LEVEL WC'S

Type	Model	Ceramic	Type*	As Shown	Width	Depth	Overall Height	Pan Height	Pan Code	Cistern Code	Flush Pipe Kit Code
High Level	Ceramic cistern	white	P	(A)	52cm	67cm	230-238cm	42cm	P2	C5	T30CHR
High Level	Polished aluminium cistern	white	P	(B)	43cm	67cm	232-240cm	42cm	P2	T58ALU	T30CHR
High Level	Black aluminium cistern	white	P	(C)	43cm	67cm	232-240cm	42cm	P2	T60BLA	T30CHR
High Level	White aluminium cistern	white	P	(D)	43cm	67cm	232-240cm	42cm	P2	T59WHI	T30CHR
High Level	Ceramic	English Garden	P	(E)	52cm	67cm	230-238cm	42cm	P2D	C5D	T30CHR
High Level	Ceramic Single Flush cistern	white	P		52cm	67cm	230-238cm	42cm	P2	C28PK	T30CHR
High Level	Ceramic cistern	white	S		51cm	67cm	230-238cm	42cm	P19	C5	T30CHR
High Level	Polished aluminium cistern	white	S		51cm	67cm	230-238cm	42cm	P19	T58ALU	T30CHR

* P means horizontal P trap pan; S means S trap pan
All of the High Level combinations listed on this page are available as Angled High Level WC's (as shown on page 60). To order this simply replace T30CHR Flush Pipe Kit with T34CHR Flush Pipe Kit and add £150 to the overall cost
** Complete WC price is for a complete WC as described excluding the seat. All cisterns are dual flush except C28PK
Note: Rear entry water supply cisterns (with rear entry cistern fittings) are available using Cistern Code: C24 for ceramic cistern lever & C25 for push button



All Burlington WC fittings are factory set at 3L and 6L flush. They can be adjusted on site to flush at 2½L and 4½L.



All Burlington Close-coupled WCs are supplied with dual flush WRAS fittings.



...on all sanitaryware
See website for details

REGAL HEIGHT WC'S

Type	Model	Ceramic	For use in*	Width	Depth	Overall Height	Pan Height	Pan Code	Cistern Code	Flush Pipe Kit Code
High Level	Ceramic cistern	white	P	52cm	74cm	236-244cm	48cm	P16	C5	T30CHR
High Level	Polished aluminium cistern	white	P	52cm	74cm	236-244cm	48cm	P16	T58ALU	T30CHR
High Level	Black aluminium cistern	white	P	52cm	74cm	236-244cm	48cm	P16	T60BLA	T30CHR
High Level	White aluminium cistern	white	P	52cm	74cm	236-244cm	48cm	P16	T59WHI	T30CHR
High Level	Ceramic Single Flush cistern	white	P	52cm	74cm	236-244cm	48cm	P16	C28PK	T30CHR
High Level	Ceramic cistern wit angled flush pipe kit*	white	P	52cm	74cm	236-244cm	48cm	P16	C5	T34CHR

* Angled flush pipe kit can be used with all high level cisterns

SEATS

Colour	Material	Standard Seat	Soft Close Seat	Soft Close Seat with Handles	High Level Throne Seat
		Code	Code	Code	Code
White	Carbamide	S13	S18	S18+A51 CHR	-
Oak	Wood	S11	S16	S16+A51 CHR	S14
Mahogany	Wood	S12	S17	S17+A51 CHR	S15
Matt White**	Wood	-	S45	S45+A51 CHR	-
Dark Olive**	Wood	-	S44	S44+A51 CHR	-
Sand**	Wood	-	S43	S43+A51 CHR	-

** See page 95



BIDETS

Model	Ceramic	Width	As Shown	Depth	Overall Height	Code
Floor Standing	white	40cm	(H)	57cm	40cm	P4
Floor Standing	English garden	40cm	(I)	57cm	40cm	P4D



Ceramic traps
For converting P-trap
pans to S-trap
C26

Straight ceramic trap
C29





Wall-hung WC with concealed lever cistern and soft-close white seat. Wall-hung bidet with Claremont bidet mixer with pop-up waste. Tissue holder.

Back to Wall and Wall Hung WCs & Bidets

BACK TO WALL & WALL HUNG WC'S

Type	Model	Ceramic	Type*	As Shown	Width	Depth	Height	Code
Back to wall	Standard height WC	white	P	(A)	37cm	48cm	42cm	P14
Back to wall	Regal height WC	white	P		37cm	48cm	48cm	P15
Wall Hung	WC	white	P	(B)	37cm	50cm	36cm	P10
Concealed cistern	With ceramic lever and front/top access	white	N/A		34cm	13cm	32cm	FTL



For seats see page 54

BIDETS

Model	Ceramic	Ceramic	Type*	As Shown	Width	Depth	Height	Code
Floor Standing	Standard height bidet	white	P	(C)	40cm	57cm	40cm	P4
Wall Hung	-	white	P	(D)	36cm	50cm	35cm	P11



* P means horizontal P trap pan; S means S trap pan
** complete WC price is for a complete WC as described excluding the seat

CERAMICS

CERAMICS



Semi recessed 58cm basin, back to wall WC and Burlington soft close seat in Sand.
For furniture see page 90 & 91



...on all sanitaryware
See website for details



Cloakroom basins

Throughout the Burlington range of stunning ceramic styles, a selection of cloakroom options have been crafted so you can match your chosen style throughout the home. You'll find Edwardian, Victorian and more Classic styled cloakroom basins to achieve a consistent and beautiful look throughout every washroom.

See pages 71 for technical details on all our cloakroom basins.



Victorian cloakroom basin with chrome washstand with Claremont 3" basin taps basin plug and chain and traditional basin bottle trap.



VICTORIAN CLOAKROOM

Victorian cloakroom basin with Claremont 3" basin taps basin plug and chain and traditional basin bottle trap.

EDWARDIAN CLOAKROOM

Edwardian cloakroom basin with towel rail with Claremont 3" basin taps, basin plug and chain and traditional basin bottle trap.



CORNER CLOAKROOM

Corner cloakroom basin with Chelsea straight basin tap without waste, basin plug and chain and traditional basin bottle trap.

CURVED CLOAKROOM

Curved cloakroom basin with Claremont 3" basin taps, basin plug and chain and traditional basin bottle trap.

Every cloakroom basin is available as wall-mounted, with or without a towel rail or alternatively a chrome washstand, except the Curved basin. View the full range of options on page 71.

Cloakroom WCs & Seats



On all sanitaryware
See website for details

STANDARD HEIGHT WC'S

Type	Model	Ceramic	Pan*	As Shown	Width	Depth	Overall Height	Pan Height	Pan Code	Cistern Code	Flush Pipe Kit Code
Close Coupled	ceramic cistern lever	white	P	(A)	44cm	71cm	78cm	42cm	P5	C3	-
Close Coupled	push button	white	P		44cm	71cm	78cm	42cm	P5	C4	-
Close Coupled	ceramic cistern lever	white	S		44cm	71cm	78cm	42cm	P18	C3	-
Close Coupled	push button	white	S		44cm	71cm	78cm	42cm	P18	C4	-
Low Level	ceramic cistern lever	white	P		44cm	71cm	114cm	42cm	P2	C3	T31CHR
Low Level	push button	white	P		44cm	71cm	114cm	42cm	P2	C4	T31CHR
Low Level	ceramic cistern lever	white	S		44cm	74cm max	114cm max	42cm	P19	C3	T31CHR
Low Level	push button	white	S		44cm	74cm max	114cm max	42cm	P19	C4	T31CHR

* P means horizontal P trap pan; S means S trap pan
** complete WC price is for a complete WC as described excluding the seat
Note: Rear entry water supply cisterns (with rear entry cistern fittings) are avialble using Cistern Code: C24 for ceramic cistern lever & C25 for push button

REGAL HEIGHT WC'S

Type	Model	Ceramic	Pan*	As Shown	Width	Depth	Overall Height	Pan Height	Pan Code	Cistern Code	Flush Pipe Kit Code
Close Coupled	ceramic cistern lever	white	P		44cm	73cm	78cm	48cm	P12	C3	-
Close Coupled	push button	white	P		44cm	73cm	78cm	48cm	P12	C4	-
Low Level	ceramic cistern lever	white	P		44cm	74cm	114cm	48cm	P16	C3	T31CHR
Low Level	push button	white	P		44cm	74cm	114cm	48cm	P16	C4	T31CHR



SEATS

Colour	Material	Standard Seat	Soft Close Seat	Soft Close Seat with Handles	Low Level Throne Seat ****
		Code	Code	Code	Code
White	Carbamide	S13	S18	S18+A51 CHR	-
Oak	Wood	S11	S16	S16+A51 CHR	S19
Mahogany	Wood	S12	S16	S16+A51 CHR	S20
Matt White***	Wood	-	S45	S45+A51 CHR	-
Dark Olive***	Wood	-	S44	S44+A51 CHR	-
Sand***	Wood	-	S43	S43+A51 CHR	-

*** See page 95

**** See page 63 F & G for what a Low Level Throne Seat looks like

Cloakroom Basins

CLOAKROOM BASINS

Basin	Basins			Chrome Basin Stands		Towel Rails (F)
				Standard (E)	Regal	
	Width	Depth	Code	Code	Code	Code
Edwardian Rectangular (A)	51cm	32cm	B8*	T21A CHR	T21A CHR+T62	T6 CHR
Victorian Rectangular (B)	51cm	32cm	B9	T21A CHR	T21CHR+T62	T6 CHR
Curved (C)	51cm	26cm	P13*			
Corner (D)	60cm	45cm	B10			T8 CHR

* Edwardian & Curved Cloakroom basins are available with one tap hole on the right. To order this simply add 'R' to the product code.

(A)

(B)

(C)

(D)

(F)

(F)

(F)

(E)

(E)

Surface mounted soap dispenser
Chrome (can be mounted through a ceramic basin tap hole or a work surface)
L: 11cm, W: 7cm, D: 7cm
A48 CHR

Tap hole stopper
Chrome
A49 CHR

